




# THE L WORD BOOK PERSONALIZATION GUIDE

## ADDING A DEDICATION

After uploading your photos you will see the main customization tools (Figure F). In this tool you can start by adding an optional dedication. This dedication is intended as a way for you to personal the book for yourself or when giving as a gift. The dedication is printed on the first page of the book onto a pink page. You should not attempt to change or move the location of this text.

- To add a dedication text click on the Text tool icon in the upper left hand corner of the text box. 
- The text tool will then open as shown (Figure G). You can then type in the text of the dedication. That you want to include in the printed book.
- Click on the **Apply** button to add your text to the layout. You can optionally click on the Lock icon to prevent any further changes as you continue the customization process.

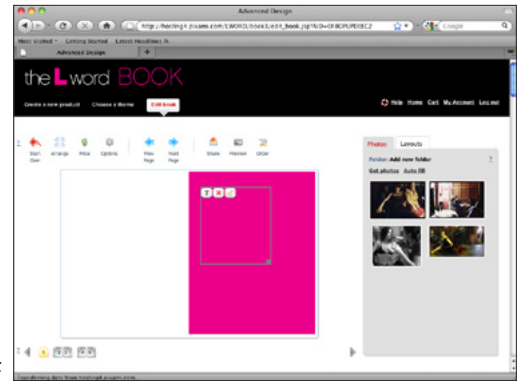
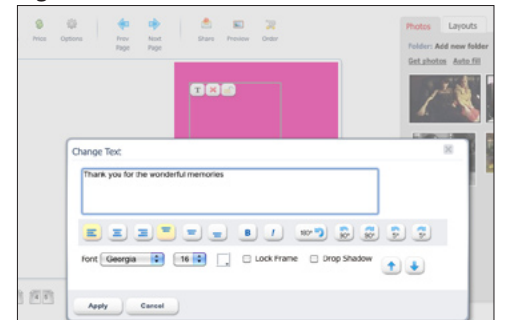


Figure F

Figure G



## CUSTOMIZING THE LAYOUT

The customization tool allows you to create and customize your layouts, add the photos and add captions (text) to each page. This tool allows you to manage the layouts on the left side and select items to add in the tab area on the right (Photos, Layout, and Text). You are able to add photos to up to four (4) pages, the pages are shown in the lower left hand corner with Page 1 being the dedication page and pages 2 and 3 (a spread) and pages 4 and 5 (a spread). These custom pages will be printed at the end of your personalized L Word BOOK.

To change a layout, add a photo or caption (text) to your layout you must DRAG the item from the tabs on the right side to the page on the left.

- Start by selecting the page in the lower left you want to work on.
- If you want to change the layout, click the **Layout** tab and then drag the layout to the page. Each grey area represents a place that you can add a photo.

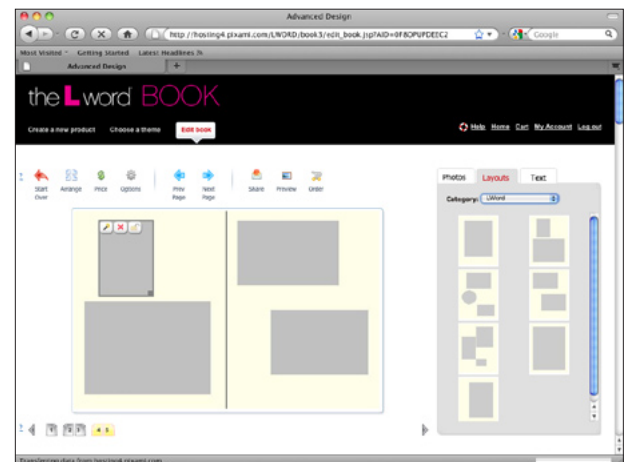



Figure H

# THE L WORD BOOK PERSONALIZATION GUIDE

## CUSTOMIZING THE PHOTOS

Once you have set your page layouts you can drag a photo from the **Photo** tab onto any of the grey boxes to add the photo to your personalized book. Once you have added the photo you can scale, crop and edit the image (Figures I & J).

- After dragging a photo into your layout, you can click on Magic wand tool to modify the photo. 
- On the Zoom and Crop tab you can zoom in or out or adjust the positioning of the photo.
- On the Advanced tab you can change the transparency as well as set images to black and white or sepia along with several other image editing features.
- Once you complete your changes click on the **Apply** button to save your changes and return to the layout screen.

As shown in Figures I & J, if your photo has a yellow warning sign over it, the system is warning you that the photo's size (resolution) is low (small) given the size you have selected for the photo. This warning indicates that the photo may not print well. If possibly you should replace the photo with a higher resolution photo.

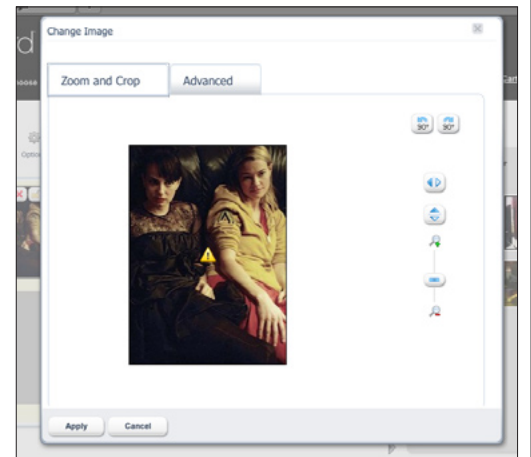


Figure I

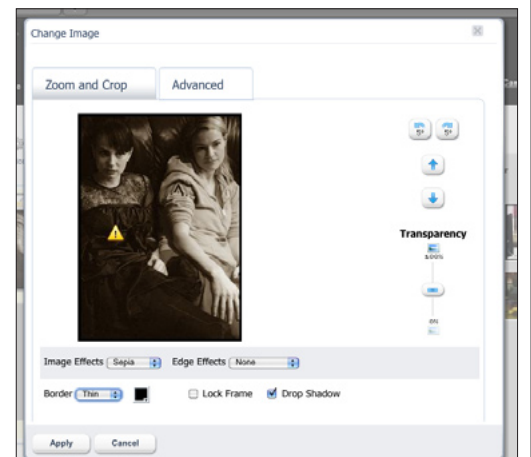



Figure J

## ADDING CAPTIONS (TEXT)

You can also add a caption (or text) to your layouts using the Text tab.

- Click on the **Text** tab and drag one of the boxes onto your layout. You can then position and size it as you like.
- To add the actual text or set the color, font or size of the text click on the Text tool icon. 
- Once you have set the text, click on the **Apply** button to save your changes.

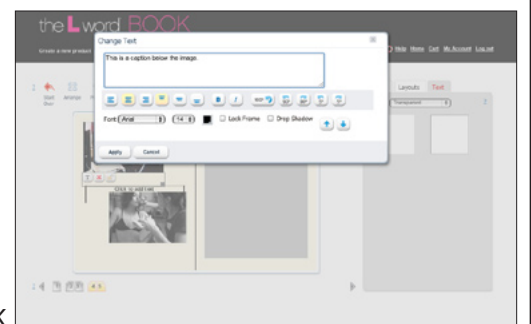


Figure K

# THE L WORD BOOK PERSONALIZATION GUIDE

## COMPLETING YOUR ORDER

Before starting the check-out and order process you can Preview your customized pages or even share your design with a friend or loved one.

- Click on the **Preview** button to view as a 5 page PDF file your design.
- Click on the **Share** button to send a link to your personalized book to a friend or loved one. A screen will allow you to type in an email address and a short message.
- Click on the **Order** button to start the order process. This process will then lead you through a standard online check-out process that will securely collect your credit card information and billing and shipping addresses.

